

Document Pack

**Democratic Services Section
Chief Executive's Department
Belfast City Council
City Hall
Belfast
BT1 5GS**



13th June, 2014

SPECIAL MEETING OF TOWN PLANNING COMMITTEE

*(to which all Members of the Council are invited to attend)

Dear Alderman / Councillor,

The above-named Committee will meet in the Lavery Room (Room G05), City Hall on **Monday, 23rd June, 2014 at 4.30 pm**, for the transaction of the business noted below.

You are requested to attend.

Yours faithfully

PETER McNANEY

Chief Executive

AGENDA:

1. **Routine Matters**
 - (a) Apologies
 - (b) Declarations of Interest
2. **Department for Regional Development - Transport NI's Spring Report**
(Pages 3 - 64)

This page is intentionally left blank

transportni



Department for
**Regional
Development**
www.drdni.gov.uk

EASTERN DIVISION

Report to

BELFAST CITY COUNCIL

Spring 2014



INVESTORS
IN PEOPLE

CONTENTS	PAGE
FOREWORD BY EASTERN DIVISIONAL MANAGER	5
1.0 INTRODUCTION	6
2.0 STRATEGIC ROAD IMPROVEMENTS	15
2.1 York Street Interchange Scheme	16
2.2 A2 Sydenham Bypass Improvement Scheme	17
2.3 A55 Knock Road Improvement Scheme	17
3.0 NETWORK DEVELOPMENT	19
3.1 Minor Works	20
3.2 Route Improvement Studies	20
3.3 Bus Measures	20
3.4 Maintenance of Structures	22
3.5 Belfast On The Move	26
4.0 NETWORK TRAFFIC AND STREET LIGHTING	27
4.1 Collision Remedial Schemes	28
4.2 Traffic Schemes	28
4.3 Pedestrian Measures	29
4.4 Safer Routes to School	31
4.5 Traffic Signs	32
4.6 Carriageway Markings	34
4.7 Legislation	37
4.8 Disabled Parking Bays	38
4.9 Street Lighting	39
4.10 Cycle Measures	41
4.11 Traffic Calming	42
4.12 Car Parking	44
4.13 Residents' Parking	44
5.0 NETWORK TRANSPORT TELEMATICS	47
5.1 Network Transport Telematics	48
6.0 NETWORK MAINTENANCE	51
6.1 Carriageway Resurfacing	52
6.2 Footway Resurfacing	54
6.3 Drainage	56
6.4 Surface Dressings	57
6.5 Public Realm	57
6.6 Streets Ahead Project	57
6.7 Liaison with Utilities	58
7.0 NETWORK PLANNING	59
7.1 Adoptions	60
7.2 Planning Applications	61

FOREWORD BY THE EASTERN DIVISIONAL MANAGER



Kevin Monaghan
Divisional Manager

I am very pleased to present this report to Council members. The report highlights the work completed in the Belfast City Council area last year (2013/14) and it outlines what we intend to do during this financial year (2014/15).

2013/14 was another challenging year for all staff within Eastern Division. There was over £135m invested in structural maintenance, improving the road infrastructure across Northern Ireland in the last financial year and within Eastern Division we spent £24m on this activity. The report outlines the large number of schemes completed in the Belfast City Council area including extensive carriageway resurfacing at Belmont Rd, Springfield Road as well as Ligoneil Road at a total cost of £772K. Minor works completed included the provision of Safety barriers on Monagh By-pass, south of Monagh Link. Pedestrian measures included a new puffin crossing at Lisburn Road / Cranmore Park.

Turning to the proposed programme for the 2014/15 financial year, further resurfacing schemes are programmed for the Donegall Road – Shaftesbury Square to Euterpe Street as well as the Ormeau Road. In addition further pedestrian measures programmed include a new puffin crossing at Fortwilliam Park at the school. Other schemes have been included in this report.

I look forward to our meeting on 23rd June.

Kevin Monaghan
Divisional Manager
Eastern Division
'Hydebank'
4 Hospital Road
Belfast BT8 8JL

1.0 INTRODUCTION

The Eastern Division is one of 4 Divisions within Transport NI. During the 2013/14 financial year it spanned the local Council areas of Belfast, Carrickfergus, Castlereagh, Lisburn, Newtownabbey and North Down. (See Fig.1 below)

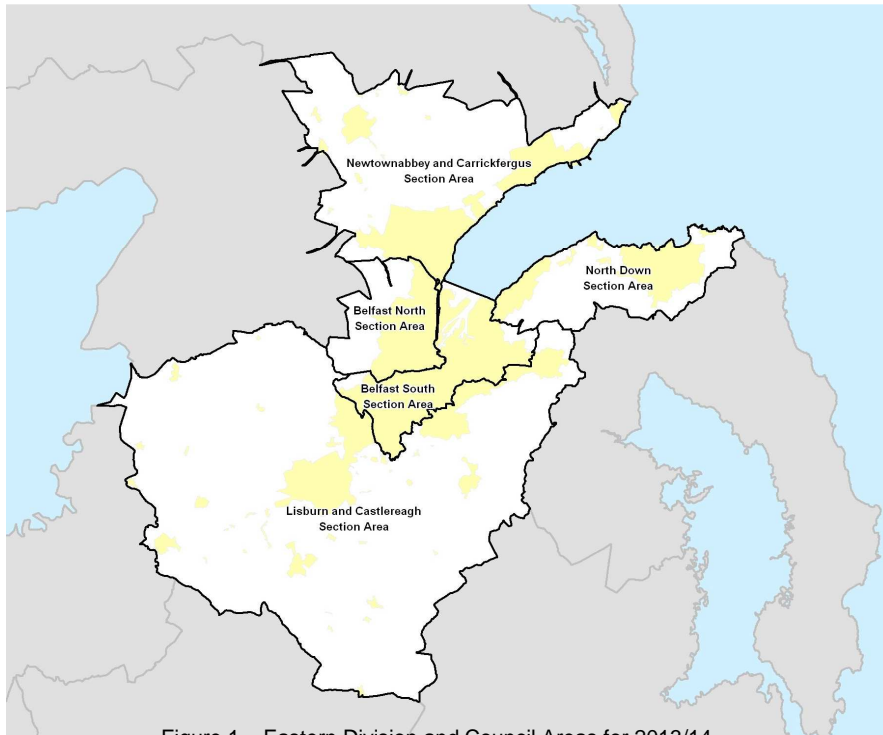


Figure 1 – Eastern Division and Council Areas for 2013/14

Eastern Division is part of the overall structure of Transport NI (see figure 2 below) which is based on separate business units for those who order services (clients) and for those who provide services (Transport NI Consultancy and Transport NI Direct).

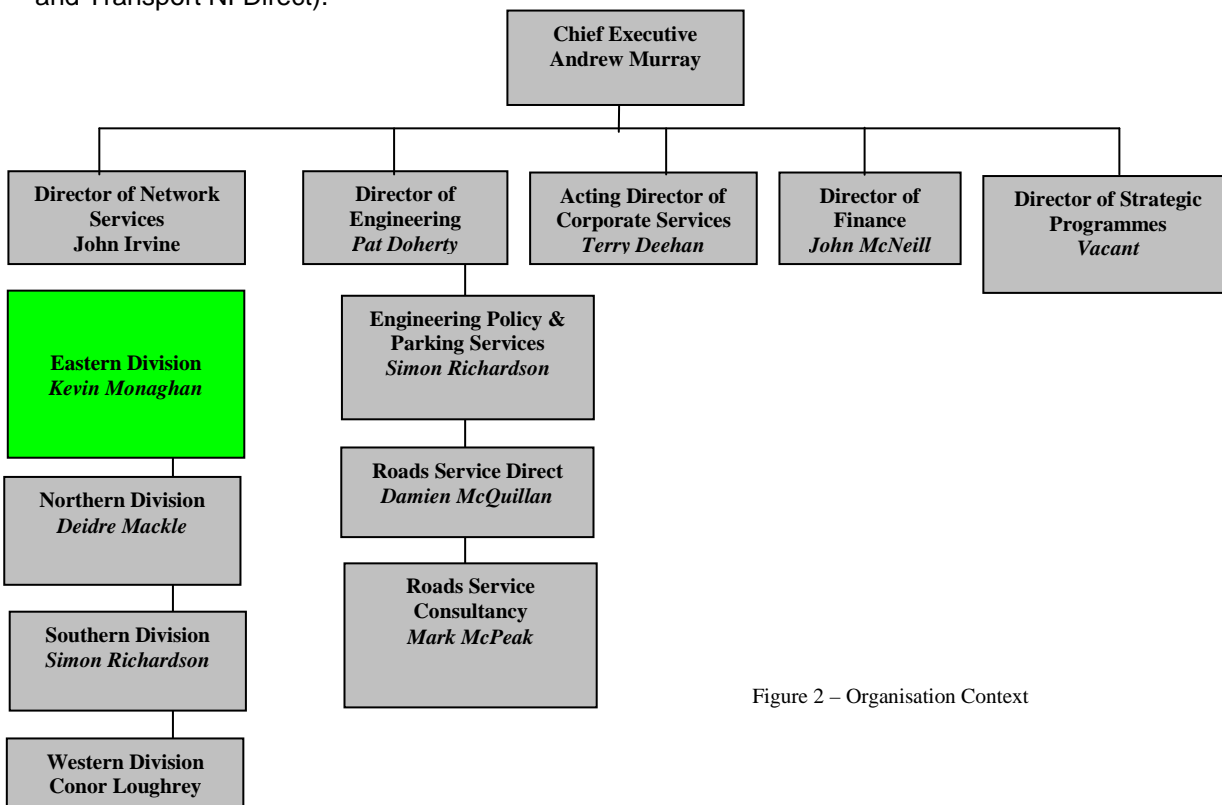


Figure 2 – Organisation Context

Eastern Division Management Structure



Kevin Monaghan (9025 3001)
kevin.monaghan@drdni.gov.uk
Divisional Manager



Norman Chambers (9025 3006) norman.chambers@drdni.gov.uk
Network Traffic and Street Lighting

Traffic Management minor improvements, pedestrian priority, traffic orders, signing, collision remedial schemes, Street Lighting, resident and disabled parking, car parks and pay and display spaces, cycling and traffic calming.



Philip Robinson (9025 3080) philip.robinson@drdni.gov.uk
Network Planning

Development Control, Private Streets and Transport Assessments



Brian Maxwell (9025 4500) brian.maxwell@drdni.gov.uk
Network Transport Telematics

Traffic signal control, operation of the Traffic Information and Control Centre, Traffic and travel information and European projects INSTANT and STREETWISE.



Attracta Tremers (9025 3036) attracta.tremers@drdni.gov.uk
Business Support

Financial control, land acquisition and disposal, retained human resources, building management and office supplies, council reports, business plan and communications.



Roy Spiers (9025 3002) roy.spiers@drdni.gov.uk
Strategic Route Improvements

Developing and progressing Strategic Highway Improvements within Eastern Division.



Stephen Pollock (9025 3071) stephen.pollock@drdni.gov.uk
Network Development

Minor works programme, maintenance and strengthening of structures, QBC & bus priority, 'Park and Ride schemes, Forward Planning, BoTM, and BRT infrastructure delivery.

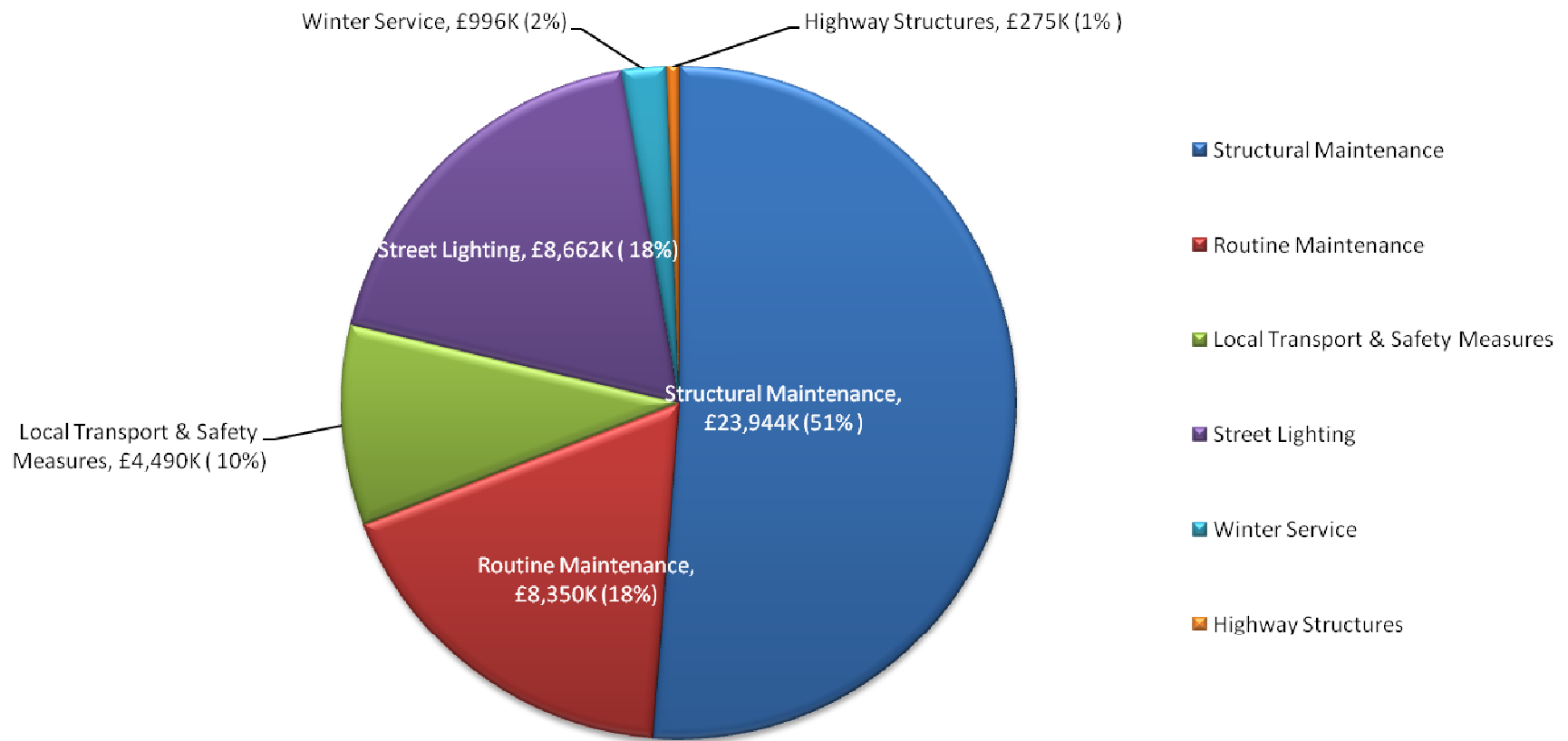


Colin Sykes (9025 3111) colin.sykes@drdni.gov.uk
Network Maintenance

Maintenance of adopted roads and footways including inspections, resurfacing, drainage, grass cutting and weed control, winter gritting and liaison with the utility companies.

NB: Figures provided are Eastern Division's provisional outturn, which are subject to Audit before finalisation.

Eastern Division 2013/14 Expenditure Profile (up to end of March 2014)



Belfast City Council area – Key Statistics

Roads infrastructure	Eastern Division 2013/14	Belfast City Council area 2013/14	Eastern Division 2014/15	Belfast City Council area 2014/15
Length of public road (km)	3549	892	2342	1104
Length of footway (km)	3849	1775	2980	2158
Number of bridges	667	103	395	133
Number of street lights	108213	36108	72842	44853
Number of car parks	78	33	47	34
Number of car parking spaces	5809	2621	5594	2744

WHAT WE DO

Maintaining the road network

Structural maintenance

Maintaining the network in a safe and serviceable condition remains one of our highest priorities.

Structural maintenance includes:

- The resurfacing and surface dressing of roads and footways
- The repair of surface defects, such as potholes and broken flagstones
- The replacement and repair of road gullies, culverts and manholes

Within the Eastern Division area in 2013/14 we:

- Invested £24 million on structural maintenance
- resurfaced 153 lane kilometres of the road network
- resurfaced 48 km of footways

Condition of the network

Monitoring the condition of our road network is an essential part of planning maintenance work and, in order to detect deterioration at an early stage, we undertake a number of annual road condition surveys using specialist vehicles to measure the strength, surface condition and skidding resistance of our roads.

In 2013/14 75.9% of the motorway and 75% of trunk road network had a residual life of more than 5 years compared to a target of 70% and 60% respectively. The information from the survey gives us an indication of areas of the road network which require further investigation and are likely to require maintenance.

Routine maintenance

Routine maintenance is important, both to enhance user safety and to help prevent more significant and costly maintenance problems building up over time.

In Eastern Division during 2013/14 we:

- invested around £5.9 million replacing road markings, cutting grass verges to maintain visibility, emptying gullies and maintaining or replacing safety barriers, maintenance of street trees, verges and fences.
- repaired 68922 road defects following inspections.

Managing the road

We manage the road network to promote its safety and efficient operation. We have continued to make use of the latest technology and traffic management techniques to improve road safety, provide facilities for all road users, and effectively manage the network. This has included:

- Monitoring and management of traffic signal timings
- Responding to at least 97% of urgent traffic signal faults within 24 hours
- The use and extension of traffic control and monitoring systems
- The promotion and introduction of Puffin crossings
- The provision and management of motorway control systems
- The provision of accurate and reliable traffic information to the public

Within Eastern Division during 2013/14 we:

- Enhanced the provision of real time information to Road Users by the installation of 8 new electronic message signs on the M2 foreshore to enable the display of both text and pictograms.
- Commenced migration of the BusTrak system (Real Time Passenger Information) to a new operating platform to ensure its continued robustness and expandability.
- Upgraded the communications system to the non-motorway electronic message signs to allow for further roll-out of more signs
- Provided pre-trip information on the trafficwatch website, www.trafficwatchni.com, radio broadcasts and our traffic information telephone line 08457123321. Carried out further enhancements to the trafficwatch website to ensure its continued robustness.

Winter Service

The aim of winter service is to help, as far as possible, main road traffic to move safely and freely in wintry conditions by spreading salt at the most effective times.

Eastern Division, has a fleet of 22 gritters and over 100 personnel available to salt approximately 1,239km of main roads.

There were approximately 56 call-outs this year, using around 8399.2 tonnes of salt, at a cost of just under £13.5k per call-out to treat all roads on the salting schedule. Eastern Division completed 96% of winter salting actions within 4 hours, exceeding the target.

Our total winter service expenditure was £996K.

Emergency Response Service

We have procedures in place to assist with roads related emergency incidents to ensure a response, 24 hours a day, 7 days a week.

Our emergency response procedures are supported by a well established reporting system to gather operational information from across Northern Ireland during an emergency. A lead communicator is available out of hours all year round to ensure that the latest news on road

conditions is available to the travelling public and we have enhanced the trafficwatch website to enable the lead communicator to keep this information updated including Social Media System and Twitter.

Development Control and Private Streets

Development Control staff act as consultee to DOE Planning, providing advice on road safety, traffic progression, transportation, roads layout/standards and policy compliance.

During the 2013/14 financial year, Eastern Division dealt with over 3482 planning application consultations and processed an average 78.4% of these within 15 working days. (A 70% return is the target set in the Service Level Agreement with Planning Service).

In relation to new housing developments, 19.3km of Private Streets have been determined in 2013/14. This means that when and if the streets are built to the agreed layout and standard they will be adopted into the public roads network.

79 new sites have started since April 2013 representing approximately 10km of new roads and footways. At 31 March 2014 we held £35.9M in bonds, and during 2013/14, £4.2M bonds were processed with £4.4M released on adoption.

Street Works

Our road network is a major public asset valued at over £32 billion. It accommodates a network of underground pipes and cables which deliver key services to the public including water supply, waste water disposal, electricity, gas and telecommunications.

Utility companies have the right to open the public road to place or maintain their equipment. In 2013/14 there were 46840 utility company road openings across Northern Ireland, with some 19781 in Eastern Division. We work closely with utility companies to minimise disruption caused by street works and ensure better quality reinstatements.

Our Inspectors in Eastern Division have carried out over 5960 visits to streetworks sites to inspect work in progress and completed reinstatements.

Improving the Road Network

Major Road Improvements

Following the recent court ruling on the proposed A5 Road Scheme, the Minister along with the Executive are considering the financial impact of the ruling and the impact on future schemes.

In the meantime, work is progressing on two schemes, the A8 between Belfast and Larne, and the A2 Shore Road Greenisland.

The Budget for the period to 2015 will allow development work to continue on a range of other major projects which are important priorities. Delivery of these schemes is dependent on funding levels envisaged through the Investment Strategy for Northern Ireland 2011-21.

Within Eastern Division there is currently one road scheme under construction.

- A2 Shore Road Greenisland – Work commenced on site on 5 March 2013 and was shortly followed by the Sod Cutting Ceremony on 21 March 2013. Scheme completion is expected in summer of 2015.

Within Eastern Division there are currently three road schemes being developed. These are the York Street Interchange, the A55 Knock Road and the A2 Sydenham Bypass.

- York Street Interchange - Following the Ministerial Announcement of the Preferred Option for the York Street Interchange on 6 December 2012, work is continuing on scheme design and preparation of the Statutory Orders.
- A55 Knock Road - Roads Service published the Notice of intention to Proceed and the Direction Order in September 2012 following the completion of a Departmental Statement. Work is ongoing to ensure that this scheme can be progressed should additional funds become available.
- A2 Sydenham Bypass – the preferred option for the scheme was published in February 2010. Scheme development work is ongoing.

The commencement of construction for the York Street Interchange, the A55 Knock Road and the A2 Sydenham Bypass will depend on the satisfactory completion of an economic assessment, completion of the statutory process and the availability of funding levels envisaged through the Investment Strategy for Northern Ireland 2011-21, including any reallocation of funding following the A5 court ruling.

Bridge Strengthening

Roads Service regularly inspects its stock of bridges and other structures on the public road network.

Last year across Eastern Division we inspected 331 structures and carried out maintenance and repair work to 43 structures. In 2013/14 we spent a total of £1.634 million on strengthening and maintaining our current stock of bridges, culverts and retaining walls.

Local Transport and Safety Measures

In 2013/14 we spent over £4 million on a range of measures to improve the safety and efficiency of the road network. In Eastern Division this included implementation of:

- 9 Minor Works improvement schemes
- 9 Collision Remedial measures at specific sites
- 8 Traffic Calming measures;
- 1.3kms of new cycle facilities
- 8 Safer Routes to School;
- 9 Controlled Pedestrian Crossings
- Improvements to the trafficwatch website and the motorway control system as well as continuously ongoing work to improve the performance of our traffic signals and pedestrian controlled crossings.

Street Lighting

We provide and maintain street lighting on all adopted roads in urban areas and in certain circumstances, on rural roads.

In 2013/14 we spent £4.48 million installing new and maintaining existing lighting systems in Eastern Division. This excludes the energy costs which were £4.15 million.

Street lights are inspected every 2 weeks in winter and every 4 weeks in summer to identify any outages. In the council area, the rate of outages is 1%, which is within our target of keeping 98% of street lights working.

Customer Service

Roads Service aims to inform, consult and involve customers by:-

- supplying up-to-date information through our publications, at shows and exhibitions and our website <http://www.drdni.gov.uk/index/roadsni-3.htm> and;
- listening to customer needs; and
- remaining open, transparent and visible at all times.

We publish a wide range of information leaflets on specific road schemes and on the services we provide. Our free newspaper, "On the Move", is published twice a year and distributed through our local offices and public libraries.

We provide up-to-date travel news through our travel information website www.trafficwatchni.com and our traffic hotline for Greater Belfast on 08457 123321. Traffic information is updated at 10 minute intervals and broadcast on BBC Radio Ulster during peak times.

During the development phase of major roads projects, we consult with a wide range of stakeholders, including elected representatives and the public and, particularly, those likely to be directly affected by the works. We hold exhibitions at local venues and inform the public through press articles, leaflet drops and individual visits, as necessary.

During 2013/14 we received 5825 written enquiries from the general public and responded to 92.6% of these within 15 days.

2.0 STRATEGIC ROAD IMPROVEMENTS

Principal Engineer – Roy Spiers(9025 3129) roy.spiers@drdni.gov.uk

He is supported by the following staff:

Strategic Road Improvement 1 – Colin Pentland (ext 53212)
colin.pentland@drdni.gov.uk

Colin is responsible for progressing development of the York Street Scheme and is supported by Colin McBurney (ext 53016)



Strategic Road Improvement 2 – Basil Hassard (9025 3272)
basil.hassard@drdni.gov.uk

Basil is responsible for development of the A2 Shore Road dual carriageway scheme, the M1 / A1 Link at Sprucefield and the Sydenham By-pass scheme. Basil is supported by Bobby Murray (ext 53232).



2.1 YORK STREET INTERCHANGE SCHEME

The Westlink / York Street junction is a key link on the Strategic Road Network that presently connects Westlink and the M2 and M3 motorways through a complex traffic signal controlled gyratory system, which also connects with the local road network. This arrangement (and its high traffic usage) causes significant congestion and long delays, particularly at peak times. The recent improvements to the M1/Westlink and M2 Motorway also mean that traffic is now being delivered much more quickly to this junction.

In March 2009, Eastern Division completed the Preliminary Options Report, which assessed six options to grade separate the Westlink / York Street junction and provide direct links between Westlink and the M2 and M3 motorways. The Report recommended that four preliminary options be taken forward for further detailed consideration at the next stage of development, the Stage 2 Scheme Assessment. This work included a public consultation event into the scheme options at the Ramada Encore Hotel, Belfast

A Ministerial Announcement was made on 6 December 2012 outlining the Preferred Option for the York Street Interchange at an event in the Ramada Encore Hotel. This event was attended by a number of elected representatives and key stakeholders. Following this announcement, work has commenced on scheme design and preparation of the Statutory Orders.

The timescale for construction of the new junction will be dependent upon the successful completion of the necessary statutory procedures, an economic appraisal and the provision of funding through the normal budgetary processes.



Preferred Option to improve York Street Interchange

2.2 A2 SYDENHAM BYPASS IMPROVEMENT SCHEME

The A2 Sydenham Bypass is one of the most heavily trafficked carriageways in the Belfast Metropolitan Area and forms a vital section of the strategic highway network, linking Bangor and Belfast. The road also provides access to the key gateways of George Best Belfast City Airport, Belfast Port and to several large residential areas. The proposed scheme will widen a 2.5km stretch of the existing A2 Sydenham Bypass from a dual 2-lane carriageway to a dual 3-lane carriageway.

The scheme is currently in the third stage of a three stage assessment process. Stage 1 focused on identifying the environmental, engineering, economic and traffic advantages and disadvantages, as well as the constraints associated with broadly defined improvement strategies. This concluded in the selection of the Proposed Corridor in May 2008. In Stage 2, a detailed assessment of a range of options within the Proposed Corridor was considered. This concluded in the selection of the Preferred Option in February 2010. Stage 3, currently underway, involves detailed assessment of the Preferred Option and ongoing consultation with key stakeholders. This will result in the publication of the Statutory Orders; the draft Direction Order, Environmental Statement and Notice of Intention to Make a Vesting Order.

The Budget for the period to 2015 will allow development work on Stage 3 to continue. Progress of the scheme beyond this is subject to the satisfactory outcome of the statutory processes and future years funding.

2.3 A55 KNOCK ROAD IMPROVEMENT SCHEME

The public inquiry for this scheme was held in November 2010. The Inspector's Report, received in March 2011, made a number of recommendations and we carried out further traffic surveys and assessments in consideration of the report. The Inspector's Report and a response to the Inspector's recommendations have now been considered and included in the Departmental Statement. The Notice of Intention to Proceed and the Direction Order were published in September 2012.

The Department proposes to proceed with the scheme, however, there is no funding identified for its implementation before 2015. While the funding has not been identified, this is one of several schemes which the Department continues to progress to a procurement ready position should additional funding become available.

3.0 NETWORK DEVELOPMENT

Principal Engineer – Stephen Pollock (9025 3071) stephen.pollock@drdni.gov.uk

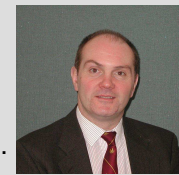
He is supported by the following staff:

Works and Structures - David Grills (9025 3153)
david.grills@drdni.gov.uk



This team is responsible for major works, minor works and Structures.

Bus Priority - Harry Armstrong (9025 3022)
harry.armstrong@drdni.gov.uk



This team is responsible for delivery of the Quality Bus Corridor (QBC) programme, other bus priority measures and park and ride.



Forward Planning - Heather Bradley (9025 3164)
heather.bradley@drdni.gov.uk



This team is responsible for the development of schemes on the non-strategic route network through route improvement studies. It is also developing and progressing the management of the Belfast on the Move Transport Masterplan proposals for the City Centre and is a point of contact for Belfast Metropolitan Area Plan inquiries and Regeneration Initiatives.

3.1 MINOR WORKS

2013/14 Works Completed

Scheme		Status
<p>Monagh By-pass at Gort na Mona</p> <p>Provision of 209 metres of safety barrier on Monagh By-pass south of Monagh Link. Scheme completed end of March 2014. (Additional to Programme)</p>		Completed
		
<p>No Minor Works schemes are currently programmed. Councillors are invited to suggest improvement schemes for consideration.</p>		

3.2 ROUTE IMPROVEMENT STUDIES

Scheme	Status
None planned in 2014/15	

3.3 BUS MEASURES

2013/14 Works Completed

Scheme	Status
Bus shelters – there are no further bus shelters available through the Roads Service contract with Adshell. A new contract will be awarded in 2015	completed
Castlereagh Street widening near Albertbridge Road junction to facilitate a more efficient traffic flow and assist bus reliability.	completed
Black's Road Park and Ride – extension to provide an additional 28 spaces.	completed
Donegall Square West – alteration to traffic island to improve access for buses.	completed
Adelaide Street – alterations to footway to provide enhanced boarding facilities and upgraded shelter.	completed

Scheme	Status
Bedford Street – Realignment of existing kerbline to protect traffic from proximity of adjacent street tree.	complete



Castlereagh Street at Junction with Albertbridge Road – Widening



Black's Road Park and Ride Extension



Adelaide Street – Enhanced Boarding Facilities

BUS MEASURES**2014/15 Programme of Works**

<i>Scheme</i>	<i>Status</i>
Belfast Rapid Transit The following schemes are programmed to be commenced during 2014/15 in connection with the Belfast Rapid Transit project: -	
Upper Newtownards Road (Sandown Road to Knock Road) - Carriageway widening, resurfacing and improvements to drainage and pedestrian crossing facilities.	Due to commence June 2014
Stewartstown Road (Finaghy Road North to Michael Ferguson Roundabout) - Carriageway widening, resurfacing and improvements to drainage and pedestrian crossing facilities.	Due to commence October 2014
Falls Road (Grosvenor Road to Whiterock Road) – Carriageway widening, resurfacing and improvements to drainage and pedestrian crossing facilities.	Due to commence August 2014
Upper Newtownards Road (Holywood Arches to Sandown Road) – Carriageway widening, resurfacing and improvements to drainage and pedestrian crossing facilities.	Due to commence March 2015

3.4 MAINTENANCE OF STRUCTURES 2013/14 Inspections & Works Completed

<i>Scheme</i>	<i>Status</i>
Principal Inspections	
Bridge No 20124 – East Bridge Street(Carriageway Span)	Completed

Scheme	Status
Bridge No 20126 – East Bridge Street(Accommodation Span)	Completed
Bridge No 20128 – York Road(Confined Space)	Completed
Bridge No 20129 – Sunningdale Park	Completed
Bridge No 20135 – Islandbawn Street/Clowney River	Completed
Bridge No 20138 – Mill Avenue	Completed
Bridge No 20139 – Ballysillan Road(Confined Space)	Completed
Bridge No 20140 - Forthriver Road	Completed
Bridge No 20142 – Springfield Road(Confined Space)	Completed
Bridge No 20144 – Shore Road Culvert(Confined Space)	Completed
Bridge No 20157 – Deacon Street Culvert	Completed
Bridge No 20171 – Queen Elizabeth Bridge	Completed
Bridge No 20174 – Station Street Flyover	Completed
Bridge No 20183 – Ballymacarrett Railway Arch	Completed
Bridge No 20185 – Newtownards Road/Connswater(Confined Space)	Completed
Bridge No 20189 – Sydenham Bypass Footbridge	Completed
Bridge No 20190 – Tillysburn Rail Bridge	Completed
Bridge No 20194 – A2 Belfast Road(Confined Space)	Completed
Bridge No 20198 – Belmont Park Footbridge	Completed
Bridge No 20203 – Stoney Road (A)	Completed
Bridge No 20204 – Stoney Road(B)	Completed
Bridge No 20205 – Newtownards Road	Completed
Bridge No 20222 – Lislea Avenue Footbridge	Completed
Bridge No 20234 – Blacks Road Rail Bridge	Completed
Bridge No 20238 – Stockmans Lane North	Completed
Bridge No 20246 – Donegall Road Railway Bridge at Roden Street	Completed
Bridge No 20247 – Abingdon Street Footbridge	Completed
Bridge No 20251 – Lower Windsor Avenue Footbridge	Completed
Bridge No 20252 – Lisburn Road/University Road	Completed
Bridge No 20253 – Botanic Avenue	Completed
Bridge No 20254 – Ormeau Road Rail Bridges	Completed
Bridge No 20256 – Kings Bridge	Completed
Bridge No 20260 – Loop Bridge	Completed

Scheme	Status
Bridge No 20262 – Bells Bridge	Completed
Bridge No 20265 – Sandown Road	Completed
Bridge No 20267 – Knock Road Culvert	Completed
Bridge No 20331 – Stockmans Way(Confined Space)	Completed
Bridge No 20333 – Forthriver Primary School	Completed
Bridge No 26720 – Wellington Place Signal Gantry	Completed
Bridge No 26730 – Donegall Sq North Signal Gantry	Completed
Bridge No 26735 – Ann Street Signal Gantry	Completed
Bridge No 26750 – York ST. Signal Gantry 1	Completed
Bridge No 26760 – York ST. Signal Gantry 2	Completed
Bridge No 26770 – York ST. Signal Gantry 3	Completed
Bridge No 26780 - M3 Northbound Sign Gantry	Completed
Bridge No 27065 – Middlepath Street Gantry	Completed
Concrete/Composite Structures	
Bridge No 20134 - Dee Street Bridge – Parapet Replacement and Repair	Completed
Bridge No 20169 – Boyne Bridge – Repairs to Steelwork and Repainting, Removal of Unsound Material and Concrete Repairs	Completed
North Queen Street Steps – Brickwork Removal and Concrete Repairs	Completed
Bridge No 20126 - East Bridge Street Arches – Concrete Repairs	Completed
Masonry Structures	
Bridge No 20248. Donegall Road at City Hospital Railway Bridge – Parapet Replacement and New Trief kerb.	Completed
Ben Madigan Heights, Construction of New Retaining Wall.	Completed
19A Antrim Road repairs to Ben Madigan Park	Completed
Steel Structures	
Bridge No 20250 Tates Avenue(Railway Span). Corrosion Protection Measures.	Completed
Miscellaneous	
Bridge No 20195 North Road Bridge – Removal of guano	Additional Completed
Bridge No 20232 Finaghy Road North, Railway Bridge - Anti Access Measures.	Additional Completed
Bridge No 20250 Tates Avenue Bridge, Belfast – Blocking up of Doors	Additional Completed
Bridge No 20333 Forthriver Primary Culvert – Removal of Debris	Additional Completed

Scheme	Status
Bridge No 20255 Ormeau Bridge – Embankment Repairs	Additional Completed
Bridge No 20258 Shaws Bridge – Graffiti Removal	Additional Completed
Longlands Court, Belfast – Replacement of Failed Retaining Wall	Additional Completed
Wolfhill Manor, Ligoniel – Culvert Repairs	Additional Completed

MAINTENANCE OF STRUCTURES Inspections & Works

2014/15 Programme of

Scheme	Status
Principal Inspections	
Bridge No 20124 – East Bridge Street(Road)	Programmed
Bridge No 20127 – North Queen Street, Culvert	Programmed
Bridge No 20129 – Sunningdale Park	Programmed
Bridge No 20130 – Clowney Culvert	Programmed
Bridge No 20135 – Islandbawn St/Clowney	Programmed
Bridge No 20139 – Ballysillan Road	Programmed
Bridge No 20189 – Sydenham By-Pass	Programmed
Bridge No 20195 – North Road Bridge	Programmed
Bridge No 20222 – Lislea Avenue, Footbridge	Programmed
Bridge No 20234 – Blacks Road Rail Bridge	Programmed
Bridge No 20247 – Abington Street, Footbridge	Programmed
Bridge No 20252 – Lisburn Road/University Road	Programmed
Bridge No 20253 – Botanic Avenue	Programmed
Bridge No 20254 – Ormeau Road, Rail Bridge	Programmed
Bridge No 20333 – Forthriver Primary School, Culvert	Programmed
Concrete and Steel	
Bridge No 20179 – Bridge End, Flyover – Repainting of Steel Parapets	In Progress
Masonry	
Stranmillis Retaining Wall – Concrete Repairs and Replacement of Metal Railings as part of an Environmental Improvement Scheme	In Progress

3.6 BELFAST ON THE MOVE

The Belfast on the Move project was undertaken by the Department to help create a more accessible city centre. By reorganising traffic management in Belfast city centre the project set out to encourage greater walking, cycling and public transport use in line with the aims of the Belfast Metropolitan Transport Plan.

The project has delivered :

- Over 2.6km of new bus lanes, which also accommodate cyclists and permitted taxis;
- A new 'two-way' traffic flow in Hope Street ;
- 23 new controlled pedestrian crossing points;
- 340m of new dedicated service bays;
- 0.5km of new dedicated cycle lanes; and
- 37 additional dedicated disabled parking bays

'Before' and 'after' surveys were undertaken to assess the impact of the project in relation to its main aims:

- a more accessible city
- a reduction in general traffic levels
- encouragement of greater walking, cycling and public transport use

In particular the surveys are considering the mode of transport used by people entering the city centre in the morning peak, traffic flows on city centre streets, and public car parking in the city centre. Survey data was collected prior to the start of the works, between 2008 and 2011, and again in autumn 2013 when the measures were fully operational. This survey data is providing the basis for the analysis of the impact of the project.

4.0 NETWORK TRAFFIC AND STREET LIGHTING

Principal Engineer – Norman Chambers (9025 3006) norman.chambers@drdni.gov.uk

He is supported by the following staff:

Traffic Management 1 - Roy Gordon (9025 3007)

roy.gordon@drdni.gov.uk



This team deals with traffic improvement schemes in Belfast.

Traffic Management 2 - Graeme Salmon (9025 3026)

graeme.salmon@drdni.gov.uk



This team deals with traffic improvement schemes in Lisburn and Castlereagh and collision remedial schemes in all council areas.

Traffic Management 3 - Paul King (9025 3029)

paul.king@drdni.gov.uk



This team is responsible for residents' parking, development of car parking, cycle measures and traffic calming.

Street Lighting - David Wright (9025 3057)

david.wright@drdni.gov.uk



This team is responsible for Street Lighting, traffic bollards and the illumination of signs.

4.1 COLLISION REMEDIAL SCHEMES 2013/14 Progress Report

<i>Scheme</i>	<i>Status</i>
Crumlin Road / Ballyutoag Road – high friction surfacing and enhanced signing.	Completed
East Bridge Street at Central Station – high friction surface on approaches to the Pelican crossing	Completed
Andersonstown Road / Kennedy Way Roundabout – high friction surface on the approaches	Completed

COLLISION REMEDIAL SCHEMES 2014/15 Programme of Works

<i>Scheme</i>	<i>Status</i>
A2 Shore Road / Fortwilliam Park – fully signal controlled right turn to Fortwilliam Park.	Programmed

4.2 TRAFFIC SCHEMES 2013/14 Works Completed

<i>Scheme</i>	<i>Status</i>
Belmont Road through village – limited waiting parking	Completed
Springfield Road – upgrade of zebra crossing	In Progress

TRAFFIC SCHEMES 2014/15 Programme of Works

<i>Scheme</i>	<i>Status</i>
Programme to be finalised.	
Boucher Road / Boucher Crescent - Signalisation	Programmed

<i>Scheme</i>	<i>Status</i>
Oldpark Road at Torrens Avenue – Build-out and road markings	Programmed
Springfield Road – upgrade of zebra crossing	In Progress
Upper Lisburn Road near Balmoral Golf Club – removal of traffic Island	Programmed

4.3 PEDESTRIAN MEASURES

2013/14 Works Completed

<i>Scheme</i>	<i>Status</i>
Antrim Road at Fortwilliam Park – additional controlled pedestrian phase across Fortwilliam Park	Completed
Lisburn Road at Cranmore Park – puffin crossing	Completed



Lisburn Road at Cranmore Park

<i>Scheme</i>	<i>Status</i>
Oldpark Road near Oldpark Terrace – pedestrian crossing	In Abeyance
Oldpark Road at Oldpark Avenue – change zebra crossing to puffin crossing	Completed
Stranmillis Road at roundabout – zebra crossing upgrade	Completed



Stranmillis Road at roundabout

PEDESTRIAN MEASURES**2014/15 Programme of Works**

<i>Scheme</i>	<i>Status</i>
Programme to be finalised.	
Bell's Bridge Roundabout – Zebra crossings upgrade	Programmed
Botanic Avenue at College Park – puffin crossing	Programmed

<i>Scheme</i>	<i>Status</i>
Boucher Road near Leisure Centre – puffin crossing or signalisation	Programmed
Crumlin Road at Library – puffin crossing	Programmed
Falls Road at Beechview Park – puffin crossing	In progress
Fortwilliam Park at School – puffin crossing	Programmed
Fortwilliam Park near Dunlambert Park - Island	Programmed
Hawthornden Way – puffin crossing	Programmed
Lisburn Road at Bradbury Centre – puffin crossing	Programmed
Oldpark Road at Westland Road / Cliftonville Road – puffin crossing	Programmed
Springfield Road at Cupar Street – change zebra crossing to puffin crossing	In Progress
Upper Lisburn Road near Kirklowe Drive – puffin crossing	Programmed

4.4 SAFER ROUTES TO SCHOOLS 2013/14 Works Completed

<i>Scheme</i>	<i>Status</i>
Finaghy Primary School, Finaghy Road South	Completed
Greenwood Primary School and Bloomfield Collegiate School, Upper Newtownards Road	Completed
Ligoniel Primary School, Ligoniel Road	Completed



Ligoniel Road approach to Ligoniel Primary School

<i>Scheme</i>	<i>Status</i>
Saint Vincent de Paul Primary School, Ligoniel Road	Completed

SAFER ROUTES TO SCHOOLS 2014/15 Programme of Works

<i>Scheme</i>	<i>Status</i>
Programme to be finalised.	

4.5 TRAFFIC SIGNS 2013/14 Works Completed

<i>Scheme</i>	<i>Status</i>
Belmont Road – 5 no. ‘Limited Waiting’ parking sign plates	Completed
Belmont Road - 1 no. ‘Disabled Parking Bay’ time plate	Completed

<i>Scheme</i>	<i>Status</i>
Cameronian Drive and Marina Park – 2 no. 'Children/School' signs	Completed
Castle Street at Donegall Place – 2 no. 'No Entry' signs	Completed
Divis Street at Westlink off-slip – direction sign	Completed
Falls Road, Grosvenor Road & Broadway – 8 no. 'Royal Victoria Hospital' direction signs	Completed
Lisburn Road at Melrose Street – 1 no. 'Urban Clearway' sign	Completed
Ormeau Road at Saint John's Avenue – pelican crossing warning sign	Completed
Oxford Street at St. George's Market – 2 no. 'Urban Clearway' signs	Completed
Seaview Drive – 'Children Crossing' sign and 'School' plate	Completed
Serpentine Road, Ballyronney Hill and Mulderg Drive – 4 no. 'Children/playground' signs	Completed
Shankill Road at Crimea Street and North Howard Street – pelican crossing warning signs	Completed
Shore Road at Greencastle – 10 no. 'One-way' repeater signs, 4 no. 'Turn left' one way supplementary plates, 2 no. 'Lane merge' signs	Completed
Stewartstown Road at Lenadoon Avenue and Suffolk Avenue – pelican crossing warning signs	Completed
West Circular Road and Old Cavehill Road – 4 no. 'School Traffic' signs to Cavehill Primary School	Completed
Woodstock Road at Radnor Street – 1 no. 'Urban Clearway' sign	Completed

TRAFFIC SIGNS

2014/15 Programme of Works

<i>Scheme</i>	<i>Status</i>
Traffic signs will be provided as required	
M1 Motorway Southbound Off Slip at Stockman's Lane – 2 no. 'Get in Lane' signs	Programmed
Rathmore Street at Evangelical Church – 'Flexible Bollards' installed	In Progress
Rutherglen Street – 2 no. 'Children/School' signs	In Progress

4.6 CARRIAGEWAY MARKINGS

2013/14 Works Completed

<i>Scheme</i>	<i>Status</i>
Ann Street at entrance to Musgrave St PSNI station – 'Keep Clear' marking	Completed
Apollo Road near Wildflower Way – extension of existing waiting restrictions (double yellow lines)	Completed
Arosa Parade at York Road – corner restrictions	Completed
Beechmount Street at Beechmount Avenue – corner restrictions and 'Give Way' markings	Completed
Boucher Road at Charles Hurst – yellow box junction marking	Completed



Boucher Road at Charles Hurst

<i>Scheme</i>	<i>Status</i>
Claremount Street at Lisburn Road – 2 no. ‘Give Way’ markings	Completed
Craven Street – corner restriction	Completed
Crumlin Road at Ligoniel Road – lay-by parking markings	Completed
Crumlin Road at Gaol – waiting restrictions (double yellow lines)	Completed
Donegall Square East at Patterson’s Place – amendment to road markings	Completed
Grand Parade at Orangefield Park – 2 no. section pedestrian guard rail	Completed
Gresham Street – ‘I’ bar marking at dropped kerb	Completed
Grosvenor Road at Durham Street ‘Yellow box junction’ marking	Completed
Hannah Glen Heights at Glen Road – ‘Give Way’ marking	Completed
Hector Street – extension of waiting restrictions (double yellow lines)	Completed
Hillside Drive at Broomhill Park & Hillside Park – corner restrictions	Completed
Howard Street at Fisherwick Place – 2 no. ‘Straight ahead arrows & 1 no. ‘turn right arrow’	Completed
Claremount Street at Lisburn Road – 2 no. ‘Give Way’ markings	Completed
Craven Street – corner restriction	Completed
King’s Road – ‘yellow box’ marking	Completed
Knocknagoney Road at Tillysburn junction – new guide lines	Completed
Landscape Terrace (off Crumlin Road) – ‘I’ bar marking	Completed
M1 southbound off-slip at Stockman’s Lane – lane guidelines	Completed
Melrose Street at Sandringham Street – corner restrictions	Completed
Mulhouse Road at Westlink – waiting restrictions (double yellow lines)	Completed
Musgrave Park at Stockman’s Lane – waiting restrictions (double yellow lines)	Completed
Nelson Street near Little Patrick Street – limited waiting restrictions	Completed
Norfolk Gardens at Norfolk Parade – ‘Give Way’ marking	Completed
Old Baker’s Court at Ardenlee Crescent – corner restrictions	Completed
Oxford Street at Queen’s Bridge – ‘Traffic lane guide line markings’	Completed
Prince Andrew Park at Donegall Road – corner restrictions	Completed

<i>Scheme</i>	<i>Status</i>
Ravenhill Road near Albertbridge Road – Amended ‘lay-by parking’ marking	Completed
Salisbury Court – corner restrictions	Completed
Serpentine Road near Serpentine Gardens – waiting restrictions (double yellow lines)	Completed
Shore Road at Greencastle – 5 no. ‘straight ahead’ and 1 no. ‘turn left’ arrows and hazard marking at police station	Completed
Springfield Road near Falls Road – limited waiting	Completed
Spruce Hill at Glen Road – ‘Give Way’ marking	Completed
Stanfield Row at Upper Stanfield Street – corner restrictions	Completed
Station Street at Middlepath Street – Guidelines, lane arrows/markings	Completed
Stoney Road – bend at Dundonald House – 1 no. ‘SLOW’ road marking	Completed
Stoneyford Street – corner restrictions	Completed
Solway Street at Newtownards Road – corner restriction	Completed
Suffolk Avenue – ‘Give Way’ triangle	Completed
Tennent Street/Hillview Road – corner restrictions	Completed
University Avenue at N.I Audit Office – corner restriction	Completed
University Street at Fitzroy Presbyterian Church – 1 no. ‘I’ bar road marking	Completed
Walnut Street at Back Street – corner restrictions	Completed
Wellington Square – corner restrictions	Completed

CARRIAGEWAY MARKINGS

2014/15 Programme of Works

<i>Scheme</i>	<i>Status</i>
Alloa Street at entrance to play park – 3 no. sections of pedestrian guard rail	Programmed
Crumlin Road near White Brae – Edge of carriageway markings	Programmed
Divis Street at Millfield – 2 no. ‘Straight ahead arrows & 1 no. ‘turn right arrow’	Programmed
Lislea Avenue – across alleyway ‘I’ bar road marking	Programmed
Lockview Road – ‘end of parking’ marks	Programmed

<i>Scheme</i>	<i>Status</i>
Massey Avenue at Stormont Estate – corner restrictions and bay markings	Programmed
Ormeau Road – Cromac Place to Cooke Street – waiting restrictions (double yellow lines)	Programmed
Regent Street at Denmark Street – corner restrictions, central hatching and edge of carriageway markings	Programmed
Upper Riga Street – ‘School Keep Clear’ marking	Programmed

4.7 LEGISLATION

2013/14 Works Completed

<i>Scheme</i>	<i>Status</i>
WAITING RESTRICTIONS	
Crumlin Road at Gaol – At Any Time	Completed
Mulhouse Road – At Any Time	Completed
Musgrave Park – At Any Time	Completed
Nelson Street – limited waiting	Completed
Ormeau Road (McClure Street to Donegall Pass) – At Any Time	Completed
Serpentine Road near Serpentine Gardens – At Any Time	Completed
TRAFFIC ORDERS	
Holylands area – one way traffic system	Completed
Lisburn Road – Tidal Urban Clearway	Completed
Malone Road - Tidal Urban Clearway	Completed
Stranmillis Road – Tidal Urban Clearway	Completed

LEGISLATION

2014/15 Programme of Works

<i>Scheme</i>	<i>Status</i>
WAITING RESTRICTIONS	
Requests for Waiting Restrictions will be assessed on individual basis.	

Scheme	Status
TRAFFIC ORDERS	
Requests for Traffic Orders will be assessed on individual basis.	

4.8 DISABLED PARKING BAYS

2013/14 Works Completed

Scheme	Status
Application for 'disabled' parking bays will be assessed on an individual basis as they are received. Bays completed/removed to date;	
99 Cullingtree Road	Completed
33 Hopefield Avenue	Completed
19 Inverary Avenue	Completed
78 North Parade	Completed
2 Oceanic Avenue	Completed
19 Wilhem Street	Completed
41 Willowfield Parade	Completed
Bays provided as part of Sustainable Transport Enabling Measures, Belfast City centre; Adelaide Street, Bedford Street, Castle Place, Chichester Street, College Square East, Fisherwick Place, Great Victoria Street, Queen Street, Upper Arthur Street, Upper Queen Street and Wellington Place	Completed
79 Strandburn Drive	Completed
40 Jocelyn Avenue	Completed
42 Jocelyn Avenue	Completed
Disabled parking bays to be removed	
28 Bloomfield Avenue	Completed
107 Connsbrook Avenue	Completed
100 Dunluce Avenue	Completed
36 Ponsonby Avenue	Completed
13 Windsor Road	Completed

DISABLED PARKING BAYS**2014/15 Programme of Works**

<i>Scheme</i>	<i>Status</i>
24 Ardenlee Gardens	Programmed
17 Clarendon Avenue	Programmed
86 Mountcollyer Avenue	Programmed
88 Roseberry Road	Programmed
270 Tennent Street	Programmed
46 Ulsterville Gardens	Programmed
23 Woodvale Road	Programmed
Removal of bays at: 6 Clarendon Avenue; 99 Joanmount Gardens and 6 Ravenhill Parade	Programmed

4.9 STREET LIGHTING**2013/14 Works Completed**

<i>Scheme</i>	<i>Status</i>
College Park Avenue	Completed
Summerhill Avenue	Completed
Greenville Road	Completed
Florenceville Drive	Completed
Forthriver Road	Completed
Rosapenna Street	Completed
Jamacia Road	Completed
Manor Street	Completed
Cliftonville Road	Completed
Glenside Park	Completed
Shannon Street	Completed
Dargan Crescent	Completed
Balmoral Link / Road	Completed

<i>Scheme</i>	<i>Status</i>
Boucher Crescent	Completed
Upper Kennedy Way	Completed
Glen Ober Park	Completed
Duncairn Gardens / Brougham Street	Completed
New Barnsley Park / Crescent	Completed
Glenalina Road	Completed
Glenside Parade	Completed
Distillery Street	Completed
Duncrue Road	Completed

STREET LIGHTING**2014/15 Programme of Works**

<i>Scheme</i>	<i>Status</i>
Falls Road (Whiterock Road – Broadway) Rapid Transit / DSD Scheme	On Hold
Falls Road (Whiterock Road – PSNI station) Rapid Transit / DSD Scheme	On Hold
Glen Road	In progress
Suffolk Road	In progress
Ormonde Gardens	In progress
Willisfield Park / Gardens / Avenue	In progress
Wedderburn Park / Gardens / Avenue	In progress
Rathmore Park / Gardens	In progress
Osbourne Gardens	*Programmed
Governors Bridge	*Programmed
Percy Street	Programmed
Bristow Park	Programmed
Cupar Street Lower	Programmed
Berwick Road	Programmed

<i>Scheme</i>	<i>Status</i>
Deramore Drive / Crescent	Programmed
Chadwick Street	Programmed
Ardavon Park	Programmed
Ardavarna Park / Crescent	Programmed
Ascot Park / Gardens	Programmed
Holidays Road	*Programmed
Ventry Street	*Programmed
Belmont Church Road	Programmed
Belmont Park	Programmed
Belmont Drive	Programmed
Seaview Gardens / Seamount	In Progress
Balholme Drive	In Progress
Norglen Gardens	Programmed
York Park	In Progress
Iris Drive	Programmed
Fairway Gardens / Avenue	Programmed

* carried over from 2013/14 Programme

4.10 CYCLE MEASURES

2013/14 Works Completed

<i>Scheme</i>	<i>Status</i>
Apsley Street – contra flow lane for cyclists.	Completed
Fane Street – Wheeling ramps.	Completed
Ravenhill Road (slip road) at Albertbridge Road junction – Road Hump.	Completed
*Various locations - Cyclehoop cycle stands	*Completed.


*Additional to 2013/14 programme.

CYCLE MEASURES**2014/15 Programme of Works**

<i>Scheme</i>	<i>Status</i>
Albertbridge Road – cycle lanes and cycle track.	*Awaiting signage
Garmoyle Street - Toucan Crossing	Programmed
Milewater Road footbridge - Wheeling ramps	Programmed
Sandown Road at Greenway - Toucan Crossing	Programmed
Various locations - Sheffield cycle stands	Programmed

*Carried over from 2013/14 Programme.

4.11 TRAFIC CALMING**2013/14 Works Completed**

<i>Scheme</i>	<i>Status</i>
Belmont Road – Gateway measures 	Completed.

Ligoniel Road – Traffic calming scheme	Completed.
	

TRAFFIC CALMING

2014/15 Programme of Works

<i>Scheme</i>	<i>Status</i>
Connsbrook Avenue – Traffic calming scheme	*Programmed. Minister to meet with elected representatives to discuss the review of this scheme.
Flax Street – Traffic Calming scheme	Programmed. Consultative and legislative process commenced in May 2014.

*Carried over from 2013/14 Programme.

It should be noted that all Traffic Calming schemes are subject to a legislative process and to the availability of funding before they can proceed.

The legislative process provides for representations / objections to be received on our proposals. Where residents do not support individual schemes or where objections are received, it may not be possible to deliver our intended programme. In this event substitutions, on a Division-wide basis, may be made throughout the financial year.

4.12 CAR PARKING**2013/14 Works Completed**

<i>Scheme</i>	<i>Status</i>
Motorcycle Parking	We have completed our consultation exercise with motorcyclists who regularly park in Belfast with a view to providing free dedicated on-street motorcycle parking, at various locations, on a trial basis.
Provision of additional On-Street Pay and Display spaces as identified.	A letter has been sent to Council indicating the streets where we propose providing additional on-Street Pay and Display parking.
Review of our off and on-street parking charges.	Following the Executive's announcement on 8 November 2012 car parking charges in towns and city centres will be frozen at current levels until at least 2015.

CAR PARKING**2014/15 Programme of Works**

<i>Scheme</i>	<i>Status</i>
Car Park Maintenance	On-going maintenance will be undertaken to our off-street car parks as required and as resources permit.
Motorcycle Parking	We are considering all of the locations in the city centre which have been identified by motorcyclists with a view to providing free dedicated on-street motorcycle parking, at various locations during this financial year, on a trial basis.
Provision of additional On-Street Pay and Display spaces as identified.	We await a reply from Council and an indication of support before we progress with this issue.

4.13 RESIDENTS' PARKING

The legislation is currently being drafted for Northern Ireland's first residents' parking schemes and we expect to have Resident's Parking Orders for Lower Malone and College Park Avenue / Rugby Road areas cleared for formal consultation during the summer months.

We consulted informally in the Rugby Road/College Park Avenue area during November 2013 and we achieved sufficient local support to allow the scheme to proceed to the formal consultation stage which, as advised above, we hope to carry out during the summer months.

We also consulted informally with the Donegall Pass and Sandy Row communities in December and January respectively but unfortunately there was not enough local support to allow us to proceed to the more formal stage.

It appears that no agreement can be reached, at this time, between the Stranmillis business and residents' associations.

5.0 NETWORK TRANSPORT TELEMATICS

Principal Engineer – Brian Maxwell (9025 4500) brian.maxwell@drdni.gov.uk

He is supported by the following staff:

Declan Murphy (9025 4536) declan.murphy@drdni.gov.uk

This team is responsible for the day to day running of the Traffic Information and Control Centre. It is responsible for the installation, maintenance and operation of Intelligent Transport Systems (ITS) including traffic control on the urban and motorway networks and the provision of traffic and travel information.



Damien King (9025 4529) damien.king@drdni.gov.uk

This team has specific responsibilities for issues of Road Safety including the development of the Road Safety Engineering Report and the establishment of Central Road Safety Unit. It is also responsible for compiling traffic census, vehicle kilometre travel surveys and managing the road works website.



TICC's TrafficwatchNI website



M1 / A12 Westlink Managed Route

5.1 NETWORK TRANSPORT TELEMATICS 2013/14 Works Completed

Scheme	Status
TRAFFIC AND TRAVEL INFORMATION	
We will continue to enhance the trafficwatchni website and improve our social media facilities as appropriate.	Ongoing
Subject to adequate funding, the M2 foreshore Variable Message Signs (VMS) will be upgraded to ensure their continued effectiveness.	8 new VMS signs installed along the M2 foreshore and M3. Complete
URBAN CLOSED CIRCUIT TELEVISION (CCTV) CAMERAS	
Review CCTV coverage to ensure its continued adequacy and identify camera locations that are in need of upgrade.	Ongoing
TRAFFIC SIGNALS	
We will monitor traffic signal timings to ensure they are appropriate for the prevailing traffic conditions and subject to adequate funding we will upgrade traffic signal equipment where necessary.	Ongoing
MOTORWAY COMMUNICATIONS AND CONTROL	
Utilise TICC's motorway communications & control infrastructure together with CCTV traffic monitoring facilities to efficiently manage traffic on motorways and the Westlink.	Ongoing
CENTRAL ROAD SAFETY UNIT	
This unit will continue to have a strategic overview of road safety and the analysis of collision data on roads across the Province.	Ongoing
Installation of additional permanent traffic counting sites.	Sites identified.

NETWORK TRANSPORT TELEMATICS 2014/15 Programme of Works

<i>Scheme</i>	<i>Status</i>
TRAFFIC AND TRAVEL INFORMATION	
We will continue to enhance the trafficwatchni website and improve our social media facilities as appropriate.	Ongoing
URBAN CLOSED CIRCUIT TELEVISION (CCTV) CAMERAS	
Review CCTV coverage to ensure its continued adequacy and identify camera locations that are in need of upgrade.	Ongoing
TRAFFIC SIGNALS	
We will monitor traffic signal timings to ensure they are appropriate for the prevailing traffic conditions and subject to adequate funding we will upgrade traffic signal equipment where necessary.	Ongoing
MOTORWAY COMMUNICATIONS AND CONTROL	
Utilise TICC's motorway communications & control infrastructure together with CCTV traffic monitoring facilities to efficiently manage traffic on motorways and the Westlink.	Ongoing
Enhance maintenance access to ITS sites along the M1	Detailed design commenced
CENTRAL ROAD SAFETY UNIT	
This unit will continue to have a strategic overview of road safety and the analysis of collision data on roads across the Province.	Ongoing

6.0 NETWORK MAINTENANCE

Principal Engineer – Colin Sykes (9025 3111) colin.sykes@drdni.gov.uk

He is supported by the following staff:

Belfast South Section Engineer - Gareth McKibbin
(9025 4609) gareth.mckibbin@drdni.gov.uk

1a Airport Road, Belfast, BT3 9DY
(As Belfast North below)



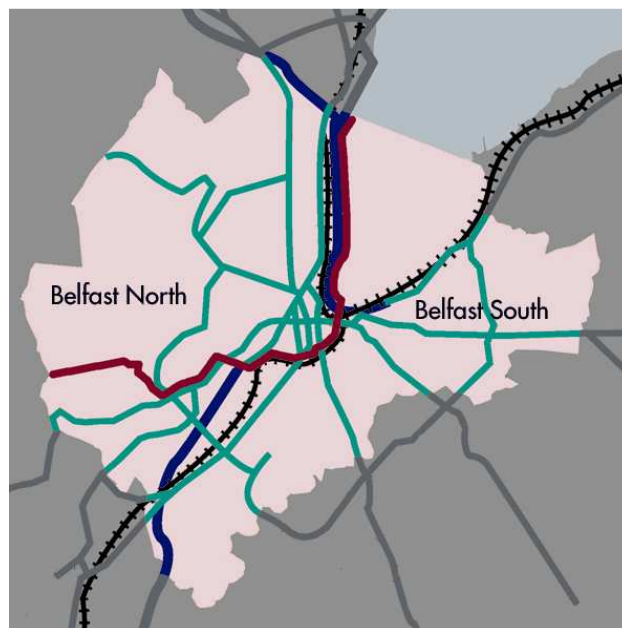
Belfast North Section Engineer – Brian O’Neill
(9025 4044) brian.oneill@drdni.gov.uk

148 – 158 Corporation Street, Belfast, BT1 3DH
This team is responsible for contacts with the public and elected representatives, highway inspections, resurfacing, responsive repairs, routine maintenance, winter gritting, road opening consents and licences, public liability claims and liaison with the service utility companies.



Support Services Acting Manager- Trevor McClay
(9025 3098) trevor.mcclay@drdni.gov.uk

This team is based at Hydebank and is responsible for general co-ordination, bidding, allocating and monitoring finances, maintenance of safety fences, contract monitoring, statistics and enforcement.



6.1 CARRIAGEWAY RESURFACING

2013/14 Works Completed

<i>Scheme</i>	<i>Status</i>
BELFAST SOUTH	
From April 2013 to March 2014, 28 km of carriageway has been resurfaced in the Belfast South area. This equates to 96,790 sqm and includes the schemes listed below.	
Broomhill Park including Broomhill Park Central	Completed
Cloverhill Park/Gardens	Completed
Cricklewood Park	Completed
Belmont Road - Hawthornden Gardens to Massey Avenue	Completed
Finaghy Road South	Completed
Glen Road – Shaws Road to Suffolk Road	Completed
Andersonstown Road Roundabout	Completed
Ballymiscaw Road – Moss Road to Tweskard Lodge	Completed
Derlett Street	Completed
Avoniel Road	Completed
North Road	Completed
Massey Avenue	Completed
Piney Hills and The Plateau	Completed
Ardcarn Park – Carnet House	Completed
Lisburn Road – Ulsterville Avenue to Windsor Park	Completed
Kennedy Way – Glen Road to Andersonstown Road	Completed
Dee Street	*Completed
Mountpottinger Road	*Completed
Ladybrook Park	*Completed
Malone Road – Roundabout to Piney Hills	*Completed
BELFAST NORTH	
From April 2013 to March 2014, 6 km of carriageway has been resurfaced in the North Belfast area. This equates to approximately 57110sqm and includes the completed schemes listed below.	
Alliance Road	Completed
Great Victoria Street (Bruce Street to Grosvenor Road)	Completed
High Street	Completed
Springfield Road (Springfield Park to West Circular Road)	Completed

<i>Scheme</i>	<i>Status</i>
Springfield Road (West Circular Road to Watermouth Street)	Completed
Westland Road (Old Westland Road to Oldpark Road)	Completed
Duncrue Street	Completed
Wheatfield Crescent	Completed
Ligoneil Road	Completed
Donegall Square West	Completed
Donegall Park Avenue	Completed
Seagrove Parade	Completed
Seagrove Gardens	Completed
Marchioness Street	Completed

CARRIAGEWAY RESURFACING**2014/15 Programme of Works**

<i>Scheme</i>	<i>Status</i>
BELFAST SOUTH	
Middlepath Street/ Bridge End - Part	Completed
Cyprus Avenue	Ongoing
Bloomfield Road	Ongoing
Donegall Road – Shaftesbury Square to Euterpe Street	Programmed
Sandown Road - Part	Programmed
BELFAST NORTH	
Bradbury Place	Programmed
Ben Madigan Park	Programmed
Forthriver Road	Programmed
Ormeau Road	Programmed
Monagh By Pass – Upper Springfield Road to Springfield Road	Programmed
Glen Road – A55 R'About to Ramoan Gardens	Programmed

6.2 FOOTWAY RESURFACING

2013/14 Works Completed

<i>Scheme</i>	<i>Status</i>
BELFAST SOUTH	
From April 2013 to March 2014, 15 km of footway has been resurfaced in the Belfast South area. This includes the schemes listed below.	
Broomhill Park including Broomhill Park Central	Completed
Cloverhill Park/Gardens	Completed
Cricklewood Park	Completed
Belmont Road - Hawthornden Gardens to Massey Avenue	Completed
Finaghy Road South	Completed
Glen Road – Shaws Road to Suffolk Road	Completed
Ballymiscaw Road – Part	Completed
Derlett Street	Completed
Avoniel Road	Completed
North Road	Completed
Massey Avenue	Completed
Piney Hills and The Plateau	Completed
Dee Street	*Completed
Ladybrook Park	*Completed
BELFAST NORTH	
From April 2013 to March 2014, 11 km of footway has been resurfaced in the North Belfast Belfast area. This includes the completed schemes listed below.	
Britton's Drive	Completed
Britton's Parade	Completed
Whiterock Crescent	Completed
Whiterock Drive	Completed
Westland Estate	Completed
Glencollyer Street	Completed
Crosscollyer Street	Completed
Ballygomartin Road	Completed
Shore Road – Mount Vernon to Donegall Park Avenue	Completed
Shore Road – Skegoneil Avenue to Fortwilliam Park	Completed

<i>Scheme</i>	<i>Status</i>
Shore Road – No 824 to No 924	Completed
Whiterock Parade	Completed
Whiterock Gardens	Completed
Duncrue Street	Completed
Ben Madigan Park	Completed
Black Mountain Estate	Completed

FOOTWAY RESURFACING**2014/15 Programme of Works**

<i>Scheme</i>	<i>Status</i>
BELFAST SOUTH	
Middlepath Street/ Bridge End - Part	Completed
Cyprus Avenue	Ongoing
Bloomfield Road	Ongoing
Donegall Road – Part	Programmed
Sandown Road- Part	Programmed
BELFAST NORTH	
Westland Estate	Programmed
York Road	Programmed
Ben Madigan Park South	Programmed
Ben Madigan Park Heights	Programmed
South Link	Programmed
St Agnes Drive	Programmed

6.3 DRAINAGE**2013/14 Works Completed**

<i>Scheme</i>	<i>Status</i>
BELFAST SOUTH	
Diamond Gardens	Completed
Finaghy Road North	Completed
Mersey Street	Completed
Lucerne Parade/ Lockview Road	Completed
BELFAST NORTH	
Antrim Road opposite Gray's Lane	Completed
Bedford Street at Dublin Road	Completed
Donegall Square West	Completed
Exchange Street West	Completed
Forthriver Close	Completed
Shore Road at Fortwilliam Park	Completed
Shore Road at 224/ 226	Completed
Sunningdale Gardens	Completed

DRAINAGE**2014/15 Programme of Works**

<i>Scheme</i>	<i>Status</i>
BELFAST SOUTH	
Finaghy Cross-Roads	Programmed
BELFAST NORTH	
Upper Crumlin Road at 1063	Programmed
Forthriver Dale	Programmed

6.4 SURFACE DRESSINGS**2013/14 Works Completed**

Scheme	Status
BELFAST SOUTH	
From April 2013 to March 2014, 2180sqm of surface dressing has been carried out in the South Belfast area. This includes the scheme listed below	
Ravenhill Court	Completed

**6.5 PUBLIC REALM
Streets Ahead Project (DSD)****2013/14 Works Completed**

The first phase of The Belfast Streets Ahead project funded by DSD, which aimed to improve the public areas of Belfast City Centre came to an end in July 2012. This work involved the reconstruction of streets with granite paving, the provision of new street furniture, lighting, signs and landscaping and also included some public art and sculpture. Future maintenance of these streets now rests with Transport NI.

6.6 Streets Ahead Project (DSD)**2013/14 Works Completed**

Scheme	Status
BELFAST NORTH	
Bank Square/ King Street	Ongoing

Streets Ahead Project (DSD)**2014/15 Programme of Works**

Scheme	Status
BELFAST NORTH	
Bank Square	Ongoing
Sandy Row/ Linfield Road	Programmed

6.7 LIAISON WITH UTILITIES**2013/14 Works Completed**

Scheme	Status
NI WATER	
Roads Service staff will continue to work closely with NI Water and their Consultants on the major upgrade of NIW mains infrastructure throughout Belfast and in particular North Belfast.	Ongoing
PHOENIX GAS	
No major infrastructure builds notified. Service connection for new customers may occur.	Ongoing
VIRGIN MEDIA	
No major infrastructure builds notified. Service connection for new customers may occur.	Ongoing
POWER NI	
No major infrastructure builds notified. Service connection for new customers may occur.	Ongoing
BT	
No major infrastructure builds notified. Service connection for new customers may occur.	Ongoing

LIAISON WITH UTILITIES**2014/15 Programme of Works**

Scheme	Status
NI WATER	
Roads Service staff will continue to work closely with NI Water and their Consultants on the major upgrade of NIW mains infrastructure throughout Belfast and in particular North Belfast.	In Progress
PHOENIX GAS	
No major infrastructure builds notified. Service connection for new customers may occur.	Ongoing
VIRGIN MEDIA	
No major infrastructure builds notified. Service connection for new customers may occur.	Ongoing
BT	
No major infrastructure builds notified. Service connection for new customers may occur.	Ongoing
POWER NI	
No major infrastructure builds notified. Service connection for new customers may occur.	Ongoing

7.0 NETWORK PLANNING

Principal Engineer – Philip Robinson (9025 3080) philip.robinson@drdni.gov.uk

He is supported by the following staff:

Development Control Team 1 – Sid Stevenson (9025 3588)
sid.stevenson@drdni.gov.uk

This team deals with development control for Belfast Council area. Sid is also responsible for private street determinations, bonds and adoption certificates for the Division.



Development Control Team 2- Colin Kelly (9025 3151)
colin.kelly@drdni.gov.uk

This team deals with development control for the Lisburn Council area. Colin also provides specialist advice on development control issues.



Development Control Team 3 - Gabriel Doherty (9025 3154)
gabriel.doherty@drdni.gov.uk

This team deals with development control for Castlereagh Council area. Gabriel also manages the review of Transport Assessments associated with planning applications and provides specialist advice in this area.



7.1 ADOPTIONS

Adoptions completed from last spring report

Location	Length Adopted (M)
Ard-na-va Road	8 metres of traditional carriageway with associated footways plus 22 metres of shared surface carriageway with amorphous turning head and 2 metre wide service strip.
Ballycarry Street	Ballycarry Street: 52 linear metres of traditional carriageway (including turning head) plus associated footways. Ballynure Street: 94 square metres of lay-by parking plus 134 square metres of footway. Ballyclare Street: 77 linear metres of footway.
Battenberg Street	140 metres of traditional carriageway with associated footways and 378 square metres of lay-by parking.
Carr's Glen Park	85m of new 2.5m wide footway along the side of the Boy's Model School to main entrance at Ballysillian Road.
Clonavogie Gardens	Clonavogie Gardens: 178 linear metres of traditional carriageway and associated footways plus 50 square metres of lay-by parking. Donegall Road: 126 linear metres of footway.
Donegall Road	Donegall Road Opposite no 201 and at rear entrance of Belfast City Hospital: 9m of carriageway associated footway with tactile paving crossing points and a traffic control (pedestrian refuge) island.
Donegall Road	456-458 Donegall Road: Junction of Rodney Parade, boundary set back 1m to provide a 1.8m footway accommodating 2 parallel parking bays.
Elimgrove Street	Elimgrove Street: 65 metres of traditional carriageway with associated footways. Torrens Crescent: 53 metres of traditional carriageway with associated footways.
Glenluce Gardens	70 metres of traditional carriageway plus 11 metres of turning head, 85 metres of footway and 78 metres of buffer strip incorporating forward sight splays.
Grovesnor Road	12 square metres of widened footway at rear of new lay-by.
Malone Chase	80 linear metres of shared surface carriageway (including turning head), plus associated service strips and buffer strips.
McGurk's Way	Great George's Street: 27 square metres of footway at rear of new lay-by. McGurk's Way: 119 linear metres of traditional carriageway with associated footways.
Ormiston Square	5m of traditional carriageway with associated footways plus 50m of shared surface carriageway with 2m wide service strip on each side.
Rosehead	Rosehead: 392m of traditional carriageway and associated footways. Rosehead Drive: 48m of traditional carriageway and turning head with associated footways.
Rusholme Walk	25 linear metres of remote footway (block paved).
Severn Street	27 metres of shared surface carriageway in Mews Court layout with 96 square metres of designated parking space and 90 square metres of hard standing.

St John's Place	From 24 Rosetta Drive to 25 St John's Avenue: 105 metres of traditional carriageway with associated footways.
York Road	Streets off York Road, incl: Arosa Parade: 211 square metres of footway plus a portion of parking lay-by equal to 80 square metres. Glasgow Street: 355 square metres of footway plus a portion of parking lay-by equal to 180 square metres. Harrisburg Street: 171 square metres of footway plus a portion of parking lay-by equal to 141 square metres. Mineral Street: 166 square metres of footway plus a portion of parking lay-by equal to 16 square metres. Pittsburg Street: 171 square metres of footway plus a portion of parking lay-by equal to 141 square metres.

7.2 PLANNING APPLICATIONS

DOE Planning already consults directly with the Council regarding planning applications which they receive in the Belfast Area. Transport NI Development Control teams advise Planning Service on the roads and transportation issues associated with both major and minor planning applications.

This page is intentionally left blank